



101.1602, 101.1604, 101.1608, 101.1612, 101.1618, 101.1625, 101.1636, 101.1648

- Ⓓ Montageanleitung + Gebrauchsanweisung
Frostschutz-Heizkabel 230 V
mit integriertem Thermostat für Wasserleitungen ½" - 1½"
- Ⓔ Mounting instructions + directions for use
Heating cable 230 V
with integrated Thermostat for water pipes ½" - 1½"
- Ⓕ Instructions de montage + instruction d'emploi
Câble chauffant 230 V
avec thermostat intégré pour canalisation de ½" - 1½"
- Ⓒ Montážní návod + prohlášení o shodě
Topný kabel 230 V
S integrovaným termostatem. Určeno pro potrubí ½" - 1½"

SUEVIA HAIGES GmbH

Max-Eyth-Str. 1

D-74366 Kirchheim am Neckar · Germany

Tel. +49 7143 971-0 · Fax +49 7143 971-80

suevia.com · info@suevia.com

Please read the manual complete before beginning!

IMPORTANT NOTE: The reliability of your heating cable depends on the elaborateness of your installation. The content of this manual was written for people who know about the use of heating cables.

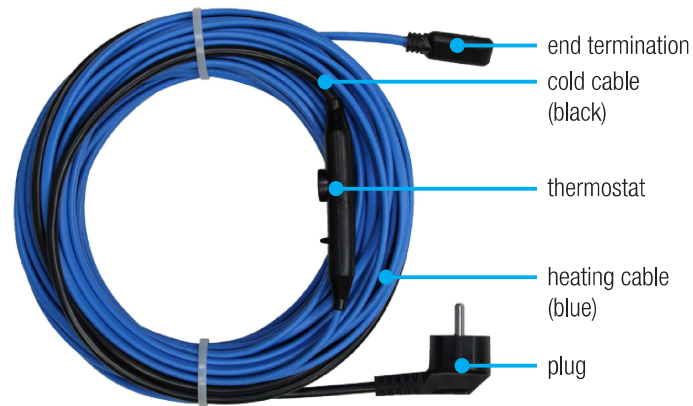
EXCEPTIONS

Technical data can be changed without prior notice. Changes, mistakes or printing errors do not justify a compensation. To ensure your safety you have to comply your installation according to your local regulations and this manual.

PURPOSE

This heating cable was specially developed to keep water pipes frost free. This manual is foreseen for installations for common pipe positions.

CABLE DESIGN



BEFORE INSTALLATION

Check the heating cable before and after the installation (Isolation test and resistance) Note the results in the protokoll.

ISOLATION

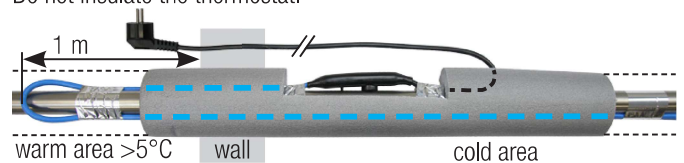
Recommendation: 20 mm thick insulation made of ARMAFLEX for pipes until 1½". This recommendation is seen as guide value for Germany and the insulation must but adapted to regions colder than -20 °C.

NOTES

- The heating cables are not allowed to be mounted directly on plastic pipes. These must be covered 100% with aluminium-tape (Ref. 101.1099) before!
- The heating cable supply must be switched on an earth-leakage trip (ELCB, 30 mA).
- The connection must be done by a legitimate electrician in accordance with valid local laws and rules.
- Power must be turned off whilst installation.
- Distance between the cables must be minimum 30 mm
- Please consider the minimal bending radius of 30 mm
- Avoid sharp edges and high mechanical forces.
- Connections in the cable must be handled with care. The drawing force must not exceed 120 N. Bending of the connections or the thermostat is forbidden!
- Do not open or replace the connections.
- Heating cables are not allowed to cross or to be folded.
- It is not allowed to extend or shorten the heating cable.
- Never use the heating cables coiled!
- Install the heating cable only at accessible areas. Do not install it

behind walls.


- Never mount a damaged heating cable (heating cable, connections, or power supply cable damaged and/or partly cut). A safe use is not possible anymore.
- The position of the heating cable has to be marked with warning notices and signs. For example in the fuse box or the water pipe drawings of the building.
- It is forbidden to make alternative constructions with the heating cables which are not mentioned in this manual.
- It is forbidden to connect the heating cable to a different voltage than 230 ± 10 V AC.
- Never use the heating cable without insulation!
- A fire resistant insulation of foam hast to be mounted. Insulation made of mineral wool can absorb moisture. Closed porous foam will not absorb moisture.
- While installation and use please avoid contact of the heating cable with oil, solvent or similar substance.
- Do not weld or grind in the area of the installed heating cable to avoid damages.
- You have to protect the heating cable and insulation of damages in case you install it in an area where animals could reach it.
- It is forbidden to submerge the heating cable into liquids.
- The thermostat has to measure the water pipe temperature at all time. Do not insulate the thermostat.



- Plug in the heating cable only while heating season.
- Check the heating cable and the insulation before every use on damages.
- If the heating cable is damaged and fails, the water pipe will freeze. You can be warned by a temperature drop with a horn by a warning system (Ref. 101.0308).

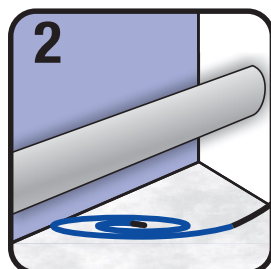
INSTALLATION PROCEDURE

1

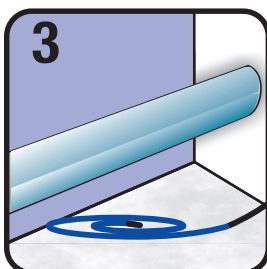


Check the heating cable before installation (isolation and resistance). The thermostat must be cooled with ice cubes or ice spray to measure. Note the results in the table, and check the resistance according the table at "technical data".

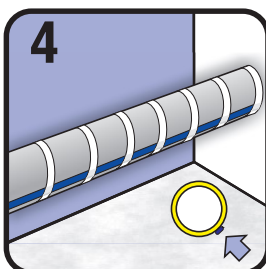
Date + time of measurement	
insulation resistance	
heating resistance	



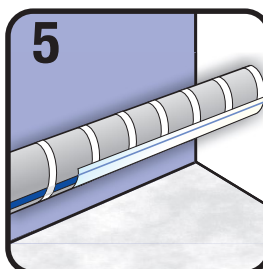
Uncoil the heating cable. Avoid loops and do not fold the heating cable.



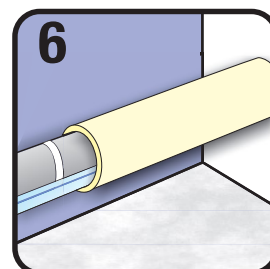
Plastic pipes must be covered 100% with aluminium-tape (Ref. 101.1099) before!



Attach heating cable lengthwise to the pipe every 30 cm with aluminium tape or glas fiber reinforced tape. Mount residual length in windings around the pipe (minimum winding distance 30 cm!). Do not cross the heating cable!



Paste over the heating cable with aluminium tape to get a better heat distribution.



Check function before attaching the isolation (use ice or ice spray on the thermostat to turn the cable on. Mount protections in animal area. Do not isolate the thermostat.

7

Check the heating cable after installation (isolation and resistance). The thermostat must be cooled with ice cubes or ice spray to measure. Note the results in the table, and check the resistance according the table at "technical data".

Date + time of measurement	
insulation resistance	
heating resistance	

8

Put the heating cable into operation. Insert the plug into a socket. This socket must be switched by an earth-leakage trip (ELCB, 30 mA). Plug in the heating cable only while heating season.

TECHNICAL DATA

Nominal voltage	230 V AC, 50 Hz
Power	15-18 W/m
Bimetal-switch, heating on	+5 °C
Bimetal-switch, heating off	+15 °C
Max. operating temperature	+90 °C
Min. operating temperature	-30 °C
Min. storage temperature	-30 °C
Min. installation temperature	+5 °C
Min. bending radius	30 mm
Length of cold cable	2 m
Plug type	CEE 7/4
IP protection	IP 67
heating cable color	blue

Ref.	length [m]	power [W]	heating resistance [Ohm]
101.1602	2	33	1520,00 - 1760,00
101.1604	4	60	836,00 - 968,00
101.1608	8	120	409,46 - 474,11
101.1612	12	180	250,80 - 290,40
101.1618	18	245	188,10 - 217,80
101.1625	25	365	120,18 - 139,15
101.1636	36	600	90,97 - 105,34
101.1648	48	790	64,75 - 74,98

KONFORMITÄTSERKLÄRUNG

Hiermit erklären wir, dass das Produkt:

Best.-Nr. 101.1602, 101.1604, 101.1608, 101.1612, 101.1618,
101.1624, 101.1636, 101.1648

folgenden einschlägigen Bestimmungen in der jeweils gültigen Fassung entspricht:

- Richtlinie 2011/65/EU
- Richtlinie 2014/35/EU
- Richtlinie (EU) 2015/863
- Richtlinie (EU) 2017/2102
- IEC 60800:2009/COR1:2009
- EN 50581:2012

DECLARATION OF CONFORMITY

We hereby declare that our product:

Ref. 101.1602, 101.1604, 101.1608, 101.1612, 101.1618, 101.1624,
101.1636, 101.1648

corresponds to the following relevant and valid regulations:

- Directive 2011/65/EU
- Directive 2014/35/EU
- Directive (EU) 2015/863
- Directive (EU) 2017/2102
- IEC 60800:2009/COR1:2009
- EN 50581:2012

CERTIFICAT DE CONFORMITÉ

Nous déclarons que les produits:

Ref. 101.1602, 101.1604, 101.1608, 101.1612, 101.1618, 101.1624,
101.1636, 101.1648

sont conformes aux normes suivantes:

- Directive 2011/65/UE
- Directive 2014/35/UE
- Directive (UE) 2015/863
- Directive (UE) 2017/2102
- IEC 60800:2009/COR1:2009
- EN 50581:2012

PROHLÁŠENÍ O SHODĚ

Tímto prohlašujeme, že produkty:

obj. č. 101.1602, 101.1604, 101.1608, 101.1612, 101.1618, 101.1624,
101.1636, 101.1648

jsou v souladu s příslušnými a platnými předpisy:

- Směrnice Evropského parlamentu a Rady 2011/65/EU
- Směrnice Evropského parlamentu a Rady 2014/35/EU
- Směrnice Evropského parlamentu a Rady (EU) 2015/863
- Směrnice Evropského parlamentu a Rady (EU) 2017/2102
- Norma IEC 60800:2009/COR1:2009
- EN 50581:2012

SUEVIA HAIGES GmbH

Max-Eyth-Str. 1

D-74366 Kirchheim am Neckar · Germany

Tel. +49 7143 971-0 · Fax +49 7143 971-80

suevia.com · info@suevia.com